

WEBINAR SERIES

# Maximize Your New 401 (k) Plan: Slavic401k Service and Resource Overview

July 17, 2024

# Today's Presenters



**Ariana Hall**

Senior Manager, Client Success  
Slavic401k



**Melissa Roman**

Account Specialist Team Lead,  
Client Success Team  
Slavic401k

# Today's Agenda

---

- Slavic401k Overview
- Client Manager Service Experience
- Employer Portal
- Retirement Plan Consultants
- Participant Experience

## Webinar Forum

*All participants are muted.*

*Please type questions in the side navigation panel and we will try to address most questions during today's session.*

*Today's presentation will be posted online at [prestigepeo.com/webinars](https://prestigepeo.com/webinars)*

# Who is Slavic401k?



Pioneer and Advocate for  
PEOs and the Retirement  
Savings Industry



Original Innovators of  
the Multiple Employer  
401(k) Plan (MEP)



Prioritized  
Client-Centric  
Solutions



Advanced  
Technological  
Tools



Strategic  
Legislative  
Advocacy



Monetary Support  
to Help Advance  
the PEO Industry



\$10B  
Assets Under  
Administration



Largest 401(k)  
Provider to the  
PEO Industry



# Prestige Adopters

## Ongoing Daily Service Experience

Adopting employers have access to a team of Account Specialists within our Client Success department. Our Account Specialists are accessible by phone and email, 8 a.m. to 8 p.m. ET, Monday – Friday.

### Experience Highlights:

- Clear delineation between participant and employer support
- Promote an efficient and positive experience for plan administrators
- The Account Specialist team works closely with internal teams and our Call Center, maximizing synergies across the relationship
- For the first 30 days (7/15 – 8/16), adopting employers have a dedicated phone number (866) 355-7250
- After 30 days, call (800) 356-3009, option 1, followed by option 3 for Adopting Employers
- Email [AdoptingEmployers@slavic401k.com](mailto:AdoptingEmployers@slavic401k.com)

# Prestige Adopters

## Employer Portal

The Employer Portal allows adopting employers to manage their company's plan entirely online.

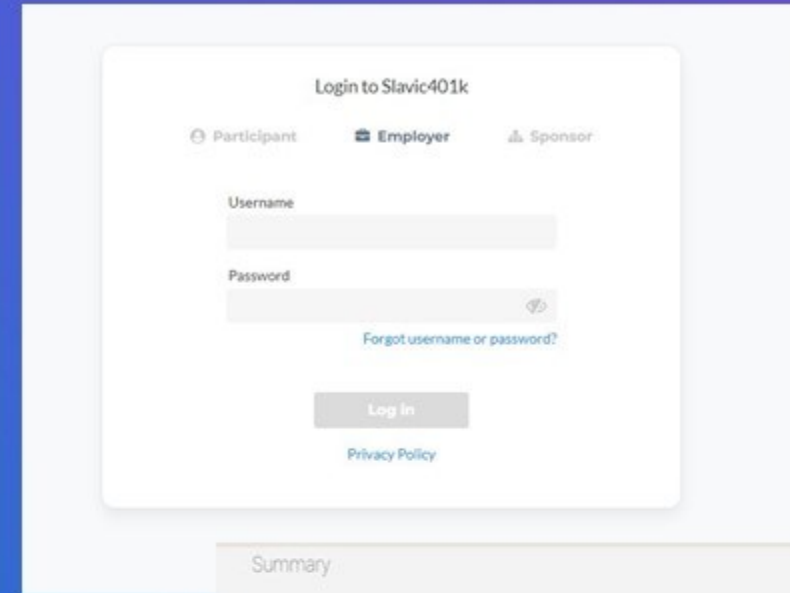
**Plan Summary:** Total Plan Balance by source or investment

**Balance by Source:** Balances are displayed by Match, Roth, Pretax, Loans and other sources

**Balance by Investment:** Balances are displayed by investment funds

**Investment Balances:** Balances by investment type and include the number of participants in each investment

**Payroll Contributions:** Totals for recent contribution files. By selecting the date, you can see details on the contribution amount by participant.



Login to Slavic401k

Participant Employer Sponsor

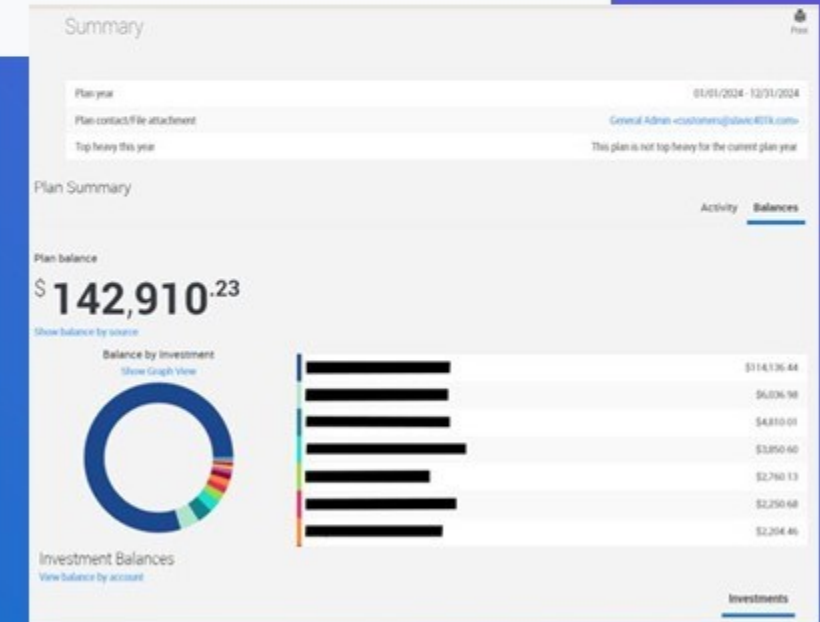
Username

Password

Forgot username or password?

Log In

Privacy Policy



# Employer Portal

## Employee Search

Select EE Search from the menu to view participants in the plan, as well as their status and balance. When you select the social security number you will see the participant's account portal exactly the way they see it when they log in.

Employee Listing

Open employee

Employee SS#  [SELECT](#)

Please enter search criteria and press submit.

SS#  EEA  SS# range  to

First name  Last name  Balance

Plan [SELECT](#) Division [SELECT](#) Plan status  Employment status

ABCDEFGHIJKLMNOPQRSTUVWXYZ

SS#	Name (Last, First Middle)	Plan	Employer	Division	Employment Status	Plan Status	Ending Balance	Edit
				Default	Terminated	Inactive		<a href="#">Edit</a>
				Default	Terminated	Inactive	\$2.65	<a href="#">Edit</a>
				Default	Hired	Active	\$28,771.14	<a href="#">Edit</a>
				Default	Terminated	Inactive	\$114,136.44	<a href="#">Edit</a>



# Employer Portal

## Manage Tab

**Transaction History:** Detailed transactions by investment, source, type of transaction, date range, and employee. Each transaction can be expanded to provide additional details

**Web Requests:** Participant online activity for allocations, contributions, pin changes, distributions, loan distributions, and transfers

The screenshot shows the 'Web Requests' form within the 'Manage' tab of the Employer Portal. The form includes a navigation bar at the top with links to Dashboard, EE Search, Manage, Plan, Forms & Reports, Fee Disclosure, Payroll, and Plan Selection. The form itself has a title 'Web Requests' and a 'Print' icon. It contains several input fields: 'Social security number' (a text box), 'Transactions to display' (a dropdown menu set to 'All'), 'Transaction status' (a dropdown menu set to 'All'), 'From (MM/DD/YYYY)' (a date picker set to '06/02/2024'), and 'Confirmation' (a text box). A blue 'SUBMIT' button is located at the bottom right. Below the form, a message states 'No records available at this time.'

The screenshot shows the 'Transaction History' form within the 'Manage' tab of the Employer Portal. The form includes a navigation bar at the top with links to Dashboard, EE Search, Manage, Plan, Forms & Reports, Fee Disclosure, Payroll, and Plan Selection. The form itself has a title 'Transaction History' and a 'Print' icon. It contains several input fields: 'Investment' (a dropdown menu set to 'All'), 'Source' (a dropdown menu set to 'All'), 'Transactions to display' (a dropdown menu set to 'All'), 'Transaction status' (a dropdown menu set to 'All'), 'Social security number' (a text box), 'Division' (a dropdown menu set to 'All Divisions'), 'Start date' (a date picker set to '06/02/2024'), and 'End date' (a date picker). There is also a checkbox labeled 'Only display records with redemption fees'. A blue 'SUBMIT' button is located at the bottom right. Below the form, there is a table with two rows of transaction data:

> 07/01/2024	Dividend of \$8.73	Show participants
> 07/01/2024	Dividend of \$9.86	Show participants

At the bottom of the form, there is a small copyright notice: 'Copyright © Slavic401k.com. All rights reserved. The contents of this site may not be reproduced or distributed without prior permission. | Problems viewing the site?'



# Employer Portal

## Forms & Reports Tab – Participant Reports

**Participant Certificate:** Account, asset and source summary, detail summary by fund, including beginning balance, contributions, gains/losses, loan payments/transfers, forfeitures, loan distributions, ending balance, and vested balance

**Online Statements:** Participant accounts, allocation percent, beginning, end and vested balance, contributions and forfeitures, gains/losses, loan payments/transfers, and premiums/loan distributions

# Employer Portal

## Forms & Reports Tab – Sponsor and Employer Reports

**Executive Summary:** Comprehensive report many employers use for management meetings that includes all high-level plan details, totals and statistics

**Census:** Wages, date of birth, hire date, hours of service, and contribution amounts

**Confirmed Totals:** Summary of plan assets by asset class

**Totals Only:** Employee's date of birth, hire date, total compensation during the date range entered, eligibility, current deferral percentage, hours of service, years of service for vesting, highly compensated employee status, and projected plan eligibility

**Eligible Not Deferring:** Eligible employees not currently deferring





# Plan Adopter Insight

## Monthly Email to Company Admin(s)

Plan Adopter Insight revolutionized compliance testing by being the first tool to conduct top heavy and ACP testing on thousands of plans monthly. Plan sponsors stay in the know to avoid end-of-year compliance headaches. Plan Adopter Insight has reduced top heavy occurrences to less than 0.10% of adopting companies.

- Plan demographic data
- Summary of EE and ER contributions
- Compliance testing results
- Plan and compliance news and insights
- Plan asset size/growth
- Employee participation levels
- Deferral amounts
- Matching and/or profit-sharing amounts
- The most subscribed to funds among plan participants
- In-depth monthly market commentary

PrestigePEO

SLAVIC401K



### 401(k) Plan Adopter Insight

Monthly testing is performed on a best effort basis and these results may not apply if your plan was merged this year, is part of a control group, or in other certain situations.

#### Compliance Testing Status

Have question

2022 Top Heavy Trend  
Passing  
**19.81%**  
≤ 60%

2021 HCE ADP Trend  
Passing  
**7.28%**  
≤ 8.26%

Learn more about compliance testing



401(K) & ECONOMIC EDUCATION

Read in browser

### Your Cost Savings Estimate

Based upon national average data, the total expense of your 401(k) plan is **56.85%** lower than the average cost for a plan of similar size.

### Plan Summary

#### PLAN ASSETS

**\$3,465,413.79**

61 employees are participating

There are 14 highly compensated employees

133 participants have balance in their account

Plan assets increased by **\$148,759.00** this month

### Monthly Activity

#### MONTHLY DEFERRALS

**\$41,881.83**

#### MONTHLY MATCH

**\$0.00**

#### MONTHLY PROFIT SHARING

**\$0.00**

### YTD Activity

#### YTD DEFERRALS

**\$487,303.99**

#### YTD MATCH

**\$0.00**



# Prestige Adopters

## Retirement Plan Consultants

The Retirement Plan Consultant (RPC) helps your company navigate complex amendment and testing conversations and decisions.

You can reach this team by emailing the inbox listed below. The inbox has a 24 to 48-hour response time.

Email: [csamendmentrequest@slavic401k.com](mailto:csamendmentrequest@slavic401k.com)



# Prestige Plan Participants

## Service Experience

Our Call Center staffs over 55 associates to assist participants via phone from 8 a.m. to 8 p.m. ET, Monday - Friday.  
Phone: (800) 356-3009

## Key Features and Upgrades

- Multi-step authentication and security processes
- High-end CSR Quality Management tools
- Improved Voice of Customer tools
- Updated phone system with improved access to data
- Work automation to some Client Success teams
- Improved process documentation to drive better caller experience



# Email Express

Email Express is a groundbreaking participant communication.

- Expert market commentary to each participant written by our Founder and CEO John Slavic. Email Express also includes educational financial and investing tips, blog posts and more.
- Account balance for every investor, keeping them informed of market conditions and how their account is performing.

**PrestigePEO** **SLAVIC401K**

## 401(k) Email Express

Account Balance as of June 2, 2022  
**\$94,273.96**

Log in to your account


### John Slavic's Marketview

The market recovered by about 3.0% this week. As you are aware, the concern over inflation continues to be its center. The Federal Reserve's resolve to fight inflation, has proved the selling over the past two months. Comments by the Board members eased some of the concern, leading to recovery.

Today's jobs report revealed 390,000 jobs being created, with the unemployment rate staying at 3.6%. The market is initiating this news because of the underlying wage inflation concern. It is important to remember that this report looks backwards at leading companies, including Tesla, have announced hiring or even layoffs. If the very hot job market begins to cool, inflationary concern will likely cool off as well.

**The US economic future, and accordingly, the market remains unclear.** Consequently, we might still have volatility ahead, but steadiness in your contributions into your account is an antidote to uncertainty.

Have a good weekend,

 **John Slavic**  
President / CEO of Slavic401k

### 401(k) Tips

#### Manage Your Money From Anywhere

The new Slavic401k mobile app is now available in the Google Play and Apple App Store! You can view your balance, manage your contributions, monitor your investment performance and more. Put the power to manage your future in the palm of your hand. Click [here](#) to download the app today!

#### Investing Insights

##### 5 Questions to Ask Your Employer About Your Retirement

As you get closer to retirement, you'll have many questions to answer, and the answers will differ based on where you work and the timing of your retirement. It's not always easy to ask the right questions, but today's blog can help you figure out where to begin.

##### Experts Say Stay Invested in a Volatile Market: But What If You're Approaching Retirement?

With market volatility running high, even seasoned investors may feel the need to reduce their equity exposure in favor of less-risky investments. However, experts say that acting on emotion and trying to time the market can heavily compromise a portfolio's long-term value and potentially put your entire retirement in jeopardy. Read more on investment risk from Yahoo Finance.

**SLAVIC401K**

If you have any questions, please contact us at (800) 356-3009 or [customers@slavic401k.com](mailto:customers@slavic401k.com).

1075 Broken Sound Pkwy NW, Suite 100  
Boca Raton, FL 33487 [FAQ](#) [Unsubscribe](#)

Balance may not include pending trades. Balance includes both vested and non-vested balances. For full trading policy, [click here](#).

Copyright © 2019 [slavic401k.com](http://slavic401k.com). All rights reserved.



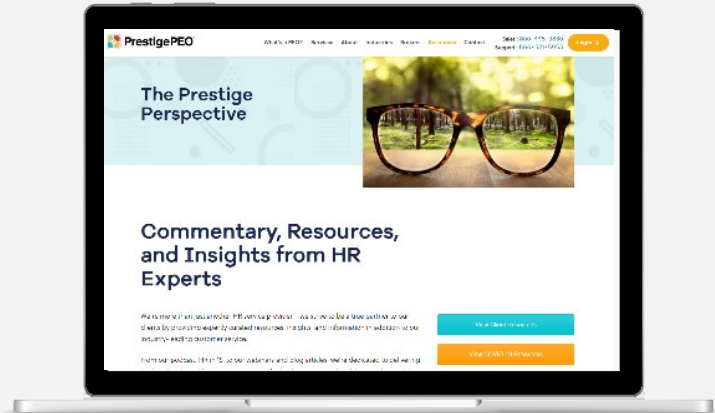
# Thank you!

## Need Help?

- For the first 30 days (7/15 – 8/16), adopting employers have a dedicated phone number (866) 355-7250
- After 30 days, call (800) 356-3009, option 1, followed by option 3 for Adopting Employers
- Email [AdoptingEmployers@slavic401k.com](mailto:AdoptingEmployers@slavic401k.com)



# PrestigePEO



You can view today's presentation and video recording by visiting:

<https://www.prestigepeo.com/webinars>



Be on the look out for our email newsletter, **PrestigePEO Insights**



Join us on **LinkedIn, Facebook, Instagram, Twitter, and YouTube** to receive event notifications and weekly updates



Reach out to your support teams – HR and Compliance, Employee Benefits, and Payroll directly from our **PrestigeGO mobile app**





**PrestigePEO™**

Human Resources, Employee Benefits, and Payroll Simplified

You started your business because you had a great idea. We started our business to handle the rest.